

StoneLite®

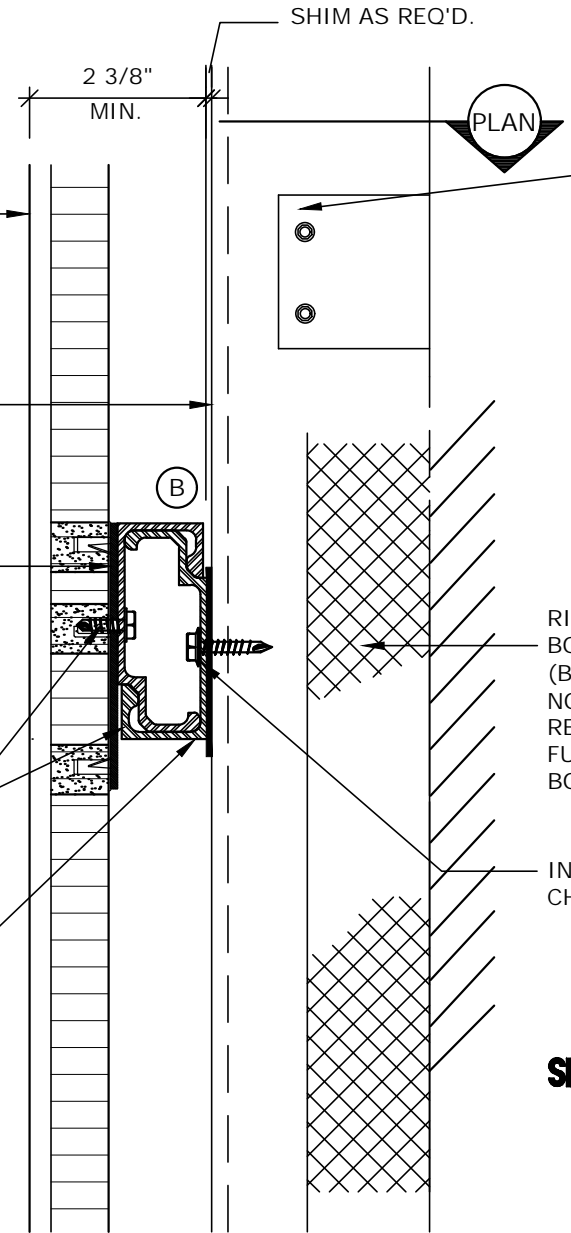
16 GA. (MIN.) CONTINUOUS VERTICAL FURRING MEMBERS DESIGNED AND SUPPLIED BY OTHERS - NOT SPI. SPACED 16" O.C. MAX-HORZ.

3 1/2" X 3 1/2" X 14GA FACTORY ATTACHED- ATTACHMENT PLATES AT 24" O.C. MAXIMUM VERTICAL & HORIZONTAL

FACTORY ATTACHED 3 1/2" LONG ALUMINUM WIDE INTERLOCKING CHANNEL TO EACH ATTACHMENT PLATE W. (2) # 10 TEK SCREWS AT EACH PLATE

FIELD ATTACH CONTINUOUS MATING ALUMINUM CHANNEL (SUPPLIED BY SPI) INTO EACH FURRING MEMBER WITH (1) #10 TEK SCREW AS REQUIRED PER SCREW MANUFACTURER

USE BUILDEX "MAXISEAL" W/ CLIMASEAL ACR FINISH & NEOPRENE WASHER OR APPROVED EQUAL.



SECTION



ATTACHMENT CLIPS DESIGNED AND SUPPLIED BY OTHERS - (NOT - SPI)

16" O.C. MAX. 16" O.C. MAX.

RIGID INSULATION BOARD (BY OTHERS) NO PSI STRENGTH REQ'D IF USING FURRING BETWEEN BOARDS

INTERLOCKING CHANNEL SYSTEM

StoneLite®

16 GA. (MIN.) CONTINUOUS VERTICAL FURRING MEMBERS DESIGNED AND SUPPLIED BY OTHERS NOT SPI- SPACED 16" O.C. MAX. - HORIZ.

PLAN

SP-21

Over Insulation Board with vertical furring

Stonepanels INTERNATIONAL LLC

2400 HWY 1431 WEST Marble Falls, TX 78654 800.328.6275 www.stonepanels.com